

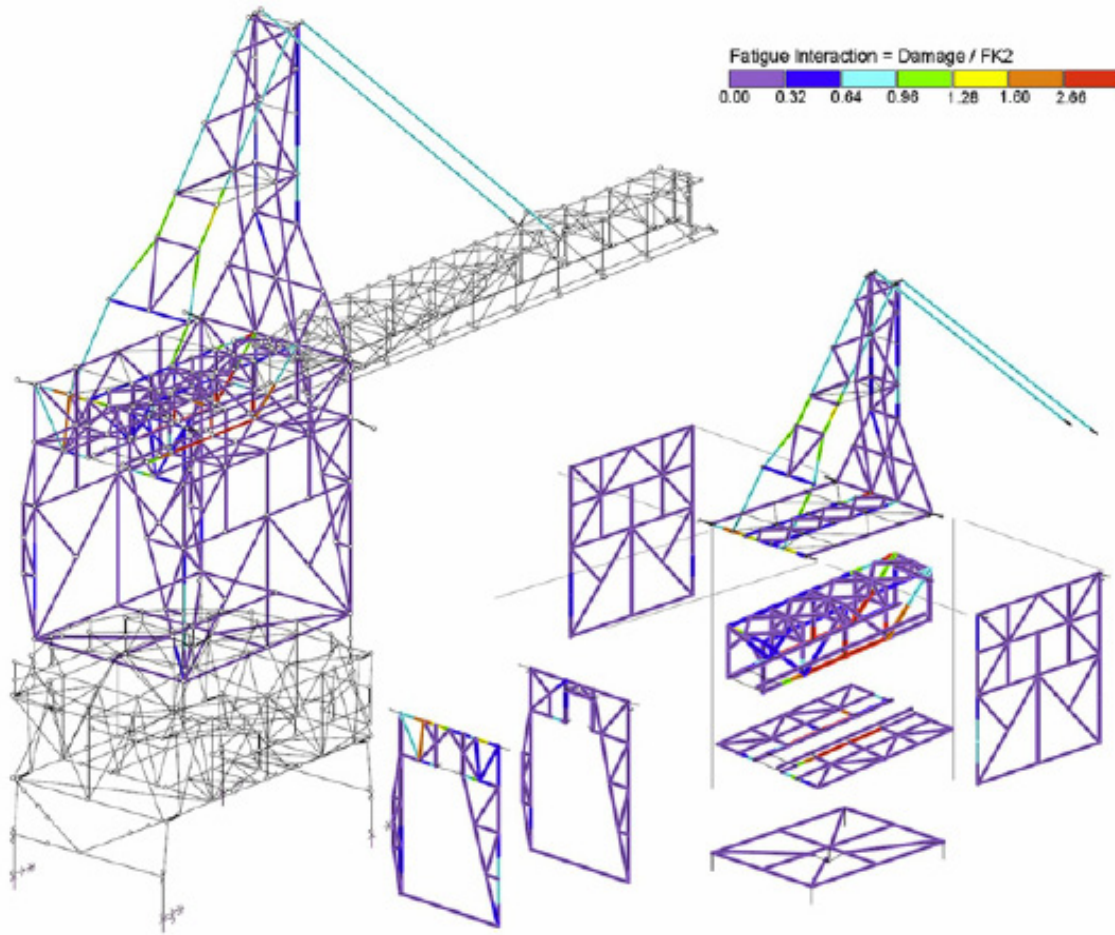


Crane Structural Maintenance Yantian International Container Terminal, China

YICT operates three Mitsubishi, three ZPMC, seven Mitsui, and two Hyundai cranes at their Yantian terminal facility. The cranes had not previously been inspected using NDT techniques such as MT or UT.

Liftech performed a useful life assessment, developed a comprehensive structural maintenance program, and prepared NDT inspection manuals. After the inspections were complete, Liftech also developed procedures to repair the detected defects.

Reference:
Yantian International Container Terminals Limited
Shenzhen, China



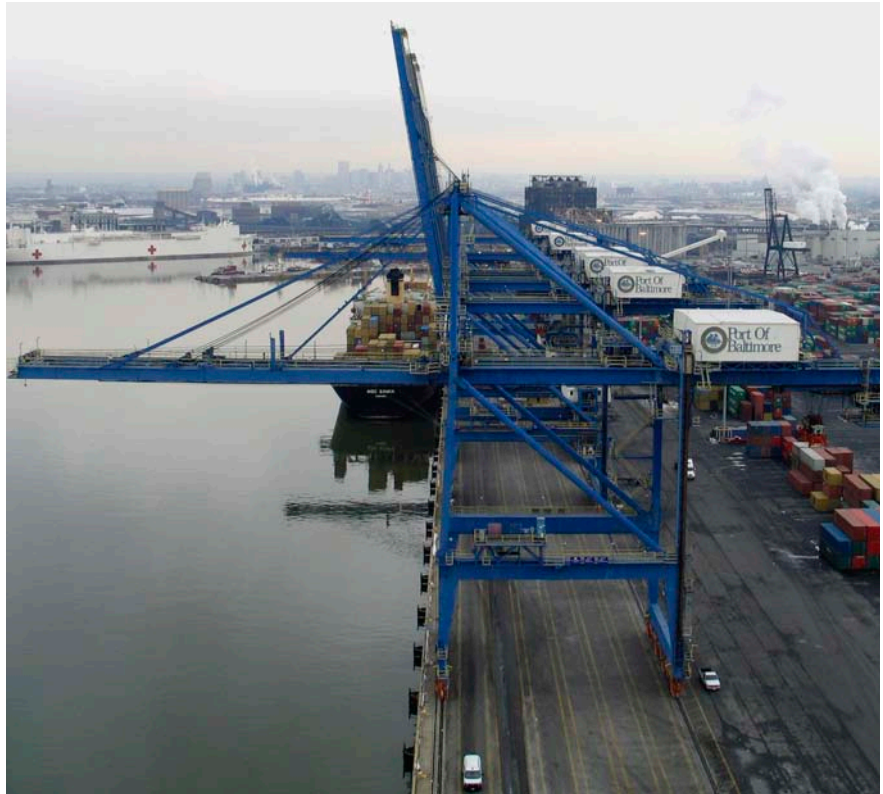
Future Fatigue in Rotor Structure

Bauxite Unloader Study

Two bauxite unloaders of identical design have been operating for over 50 years. The operator wished to continue operations for another 15 years.

Liftech analyzed the crane structure to assess the fatigue life for continued operations. The study showed that the crane structure can perform reliably for another 15 years with repair and strengthening of some members and implementation of a structural maintenance program.

Reference:
Hoist & Crane Service Group
Charlotte, North Carolina



Crane Structural Maintenance Seagirt Marine Terminal, Maryland

MPA operates seven similar Sumitomo dockside cranes at Seagirt Marine Terminal. The cranes had not previously been inspected using NDT techniques such as MT or UT. Liftech performed a structural condition survey and developed structural inspection manuals.

Reference:
Maryland Port Administration
Baltimore, Maryland