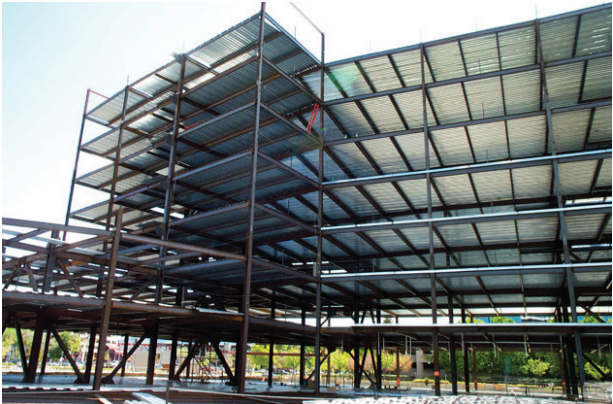


# Liftech

LIFTECH CONSULTANTS INC.



## Station Oaks Walnut Creek, California

Liftech designed this two-building complex on the corner opposite the Pleasant Hill BART Station. The 185,000 square foot, seven-story corporate office building is linked to a parking structure that features street-level retail and restaurant spaces totaling 15,000 square feet. There is one level of underground parking. The office building is steel with eccentric braced frames. The parking structure is also steel, with concentric braced frames.

Reference:  
AECOM USA, Inc.  
Oakland, California